



**Beyond the limitations,
Create solution**



HEAD OFFICE

2F, Haeyang Bldg, 9, Chungjang-daero 13beon-gil,
Jung-gu, Busan, Korea
TEL : +82-51-320-0700 FAX : +82-51-320-0755

SHANGHAI OFFICE

Wuzhong Road No. 1065 Yong Teng Building 705A Room
Minhang District, Shanghai
TEL : +86-21-51192326 FAX : +86-21-51192328

CONTACT

Domestic : ymo.kim@partner.samsung.com
TEL : +82-51-320-0716

Overseas : jhye@smsolution.co.kr
TEL : +82-51-320-0782

China : bluesky@smsolution.co.kr
TEL : +82-51-320-0731

SM Solution Co., LTD.
Marine & Offshore Total Solution

MESSAGE FROM THE CEO

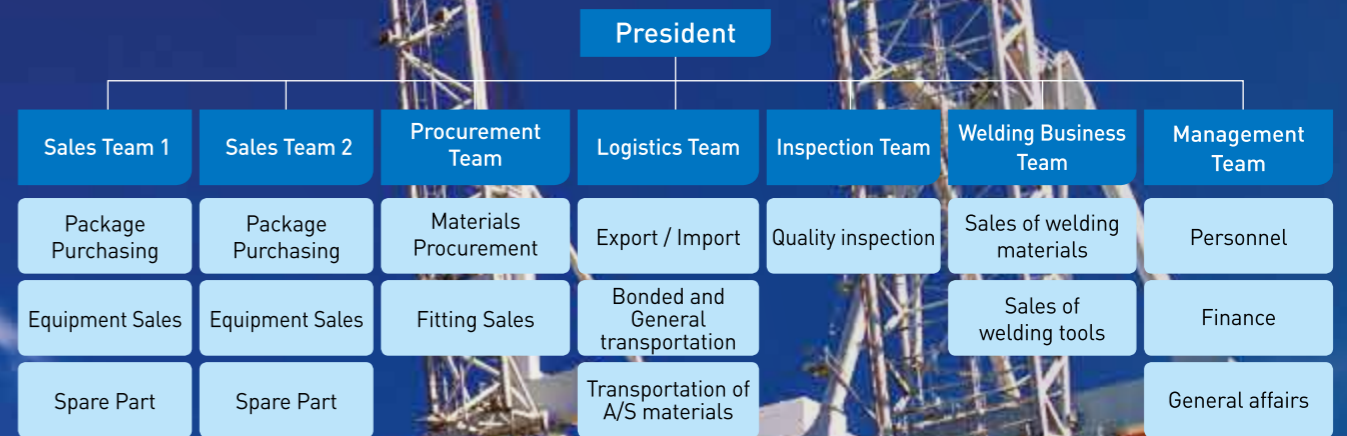
SM Solution Co., Ltd. started out as Busan Office of Samsung Heavy Industries Co., Ltd., a global leader of shipbuilding industry and was spun off from Samsung Heavy Industries in 1998. SM Solution is one of the representative small and medium enterprise in republic of Korea that has full experience and knowledge in purchasing, inspection, supply of A/S materials and logistics partnership and exports high quality equipment for marine & offshore business to overseas shipyards in the United States, China, Vietnam, Singapore, etc.

We will prioritize requirements of customers at all times, purchasing materials at competitive prices for customer satisfaction. We strive to deliver materials to customers in the right place at the right time after carrying out a thorough inspection based on accumulated professional knowledge.

We make efforts to be the best, advanced firm for offering greater benefit & best services to customers. We truly appreciate your cooperation and look forward to constant support and encouragement from you.

CEO **S.H.HAN**

Organization



Leading to the future

HISTORY



Certification : ISO 9001





Purchasing

The skillful buyers with professional knowledge provide total services for purchasing all materials needed for shipbuilding of domestic and overseas shipyards.

Package Purchasing

We supply all materials for shipbuilding such as equipment & machinery, steel outfitings, raw materials and bulks.

- » **Hull Part**
Deck machinery, BWTS, Fire fighting etc.
- » **Machinery Part**
Main engine, Generator, Propeller, Heater, Pump, Valve remote control system etc.
- » **Electric Part**
Automation system, Intercommunication, Lighting etc.

Facilities Parts Purchasing

We supply equipment components and consumable materials used to make ship blocks to Ningbo and Rongcheng Corporations of Samsung Heavy Industries.

- » **Accommodation Part**
Unit toilet, Paneling, Windows, Joiner door, Galley & Laundry Equipment etc.
- » **Bulk & Raw Materials**
Steel plate, Pipe, Steel outfitings, Valve, Fitting etc.

Procurement

We supply various outfitings for marine and offshore business of Samsung Heavy Industries in a timely manner.

Major Item

- » **Hull Part** : Silencer, Heating coil etc.
- » **Machinery Part** : Davit, Damper, Rope etc.
- » **Electric Part** : Multi core tube, Gauge etc.
- » **Accommodation Part**
: Steel furniture, Electric heater, Valve, Bolt, Nut etc.

Logistics

We provide various transportation services including imported & exported of materials for Samsung Heavy Industries.

- » Sea and air import and export business
- » Bonded transportation and general inland transportation of imported cargo
- » Transportation and storage of A/S materials for ships built by Samsung Heavy Industries
- » Just-in-Time (JIT) delivery of domestic materials (gathering, storage, packaging, transportation)

Spare Part

We supply genuine equipment with reasonable prices to each agent in many countries as customer including major shipowner.

Inspection

We guarantee quality required by customers through FAT for purchased items by us and regular management of maker.
We also offer inspection service on other materials upon customer request.

Welding Rod Sales

We supply welding materials and welding tools of domestic and overseas welding material makers as agents of Kobe Welding, Chosun Welding, Hyundai Welding, KISWEL and ESAB SeAh.

Purchasing



Procurement



Inspection



Logistics



Spare Part



Welding Rod Sales

